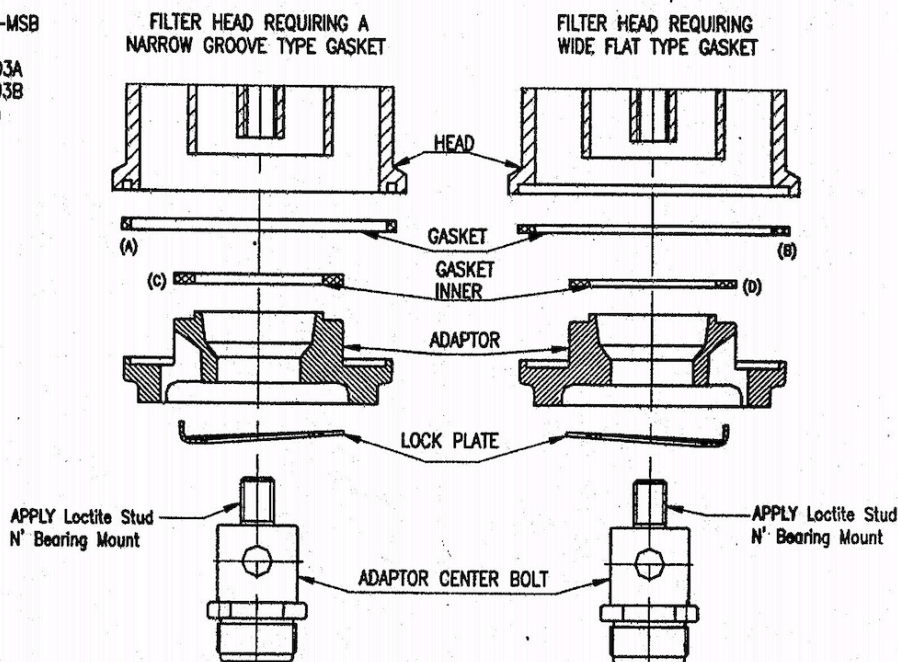


# OIL FILTER CONVERSION KIT

## REPLACEMENT GASKETS

A-G-115-MSB  
B-G-143  
C-ES-1303A  
D-ES-1303B  
Lock Plate



## INSTALLATION INSTRUCTIONS

1. Apply light coat of oil to outer sealing gasket and carefully press it in the gasket groove of the filter head.  
Note: On those heads requiring the narrow groove, use type (A) gasket.  
On those heads requiring the wide flat type gasket, use (B) gasket.
2. Apply light coat of oil to the inner gasket and place it on adaptor.  
Note : On head with casting ID 5101019 use type (D) inner seal gasket (thinner gasket). On all other heads use type (C) gasket.  
Note : The inner and outer gasket should be replaced every 100,000 miles.
3. Place the lock plate with the bent tang up on the small threaded end of the adaptor centerbolt.
4. Place the adaptor and inner gasket type (C) or (D) on filter head.
5. Apply Loctite Stud N' Bearing Mount or equivalent evenly to small threaded end of the adaptor centerbolt..(Do not use Loctite Lock N' Seal or equivalent).
6. Holding the adaptor firmly against the filter head, insert the small threaded end of the adaptor centerbolt through centerbolt of adaptor and hand tighten while locating the bent tang in one of the oil flow holes in the lock plate.  
Note: On those heads with centerbolt pilots, it is necessary to break off tangs flush with the end of the centerbolt boss.
7. Place 1 7/8 socket on adaptor centerbolt and tighten to 45/50 lb.
8. Bend the two flat lock tangs down to lock adaptor centerbolt in place.